

RIVIERA



Riviera ShowerSpa Model #7001-CH & 7001-BN Owner's Manual



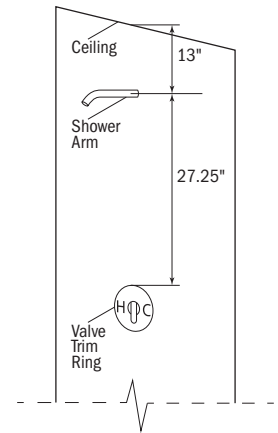
Riviera ShowerSpa Installation Instructions

BEFORE YOU BEGIN

Measure the following to ensure your Riviera ShowerSpa will fit properly

- 1) Center of existing shower arm to top of valve trim ring.
Minimum 27.25" required.
- 2) Center of existing shower arm to top of ceiling.
Minimum 13" required.

MINIMUM CLEARANCE



Parts and Tools Required

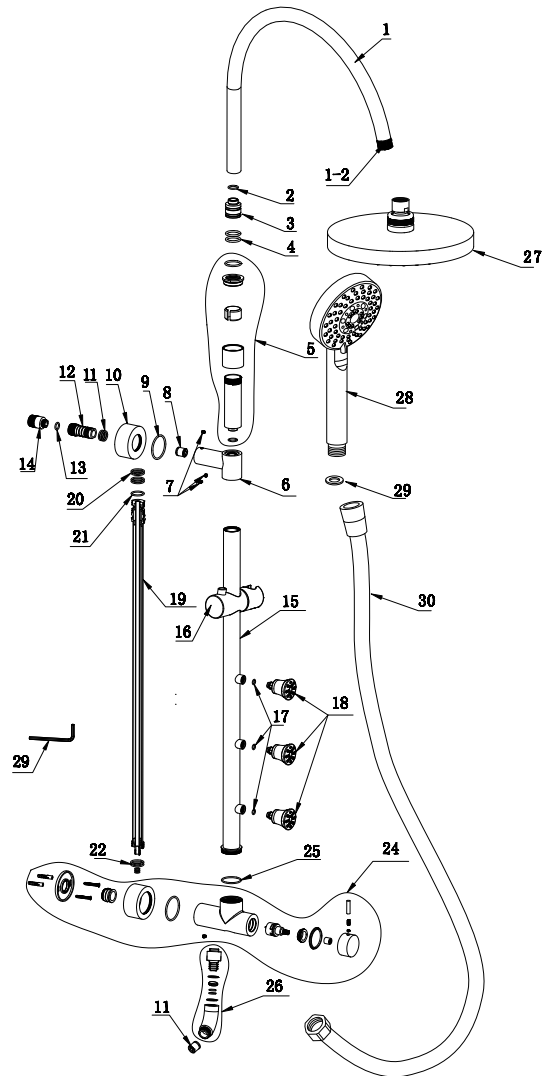
Please lay out and become familiar with all parts prior to assembly.

Read all instructions once before beginning and contact Customer Support if you have any questions at 1-888-785-7320 (8:30 am – 5:00 pm pacific time Monday – Friday)

For more information visit www.pulseshower spas.com

Parts List

- 1) Shower Arm
- 1.2) Shower Arm Connector
- 2) O Ring
- 3) Nipple
- 4) O Ring
- 5) Height Adjustment parts
- 6) Inlet Fitting
- 7) Set Screw
- 8) Check Valve
- 9) O Ring
- 10) Escutcheon
- 11) Check Valve
- 12) Inlet Nipple
- 13) O Ring
- 14) Inlet Nipple Extension
- 15) Shower Pipe
- 16) Hand Held Slider
- 17) O Ring
- 18) Body Jets
- 19) Inner Pipe
- 20) O Ring
- 21) O Ring
- 22) O Ring
- 23) O Ring
- 24) Diverter Parts
- 25) O Ring
- 26) Swivel Joint
- 27) Shower Head
- 28) Hand Shower
- 29) O Ring
- 30) Hose



Riviera ShowerSpa Installation Instructions

Congratulations on your purchase of the PULSE Riviera Rain Shower system. There's no better way to start your day!

Follow these simple steps in the order presented to help avoid mistakes. When finished, multiple, soothing showering options are at your fingertips.

Assembly and installation of the Riviera Rain Shower System is designed to be quick and easy. If you have any installation questions or performance problems call PULSE Customer Service toll free at 1-888-785-7320 (8:30 am – 5:00 pm pacific time Monday – Friday) or visit www.pulshowerspas.com before returning this product to the store.

FOR NEW CONSTRUCTION OR COMPLETE REMODEL

- A hot/cold Automatic Compensating Shower Valve which complies with ASSE 1016-2011/ASME A112.1016-2011/CSA B125.16-11 is required (NOT INCLUDED)
- Nipple should extend no more than ½" past finished wall surface.

1. Determine the length Nipple (D) needed.
 - a. Place mark on existing shower arm at wall surface. Unscrew shower arm from elbow in wall.
 - b. Measure distance from mark on shower arm to end of shower arm threads. Add ½" to this measurement, and then round to nearest ½".

Example 1: If measurement = 1¼", add ½" = 1¾", rounded = 2" NPT nipple—this is the length needed.

Example 2: If measurement = 1⅝", add ½" = 2⅛", rounded = 2" NPT nipple—this is the length needed.

IMPORTANT—If existing shower arm is located above the tile/fiberglass wall surface you must add the distance from the sheetrock to face of the tile/fiberglass shower wall to the above measurement.

NOTE—If supplied 2" Nipple (D) is not the correct length based on above formula, you must obtain the correct size, sold separately. Various length NPT brass nipples are readily available at most hardware stores.

2. Apply a generous amount of Teflon Tape (N) to both ends of the Nipple (D).
3. Hand tighten Inlet Fitting (C) onto Nipple (D), then Nipple to fitting in wall. Use adjustable wrench on the Inlet Fitting to tighten both connections simultaneously. Continue tightening until both connections are secure with no leaks.
4. Connect Top Tee (B) into Shower Pipe (E) and align with Diverter. Make sure Top Tee is fully seated into Shower Pipe and secure with Set Screw (K).
5. Slide Shower Arm (A) into Top Tee (B) and hand-tighten Retaining Nut until secure.
6. Slide Top Escutcheon (F) over Top Tee (B), then slide Bottom Escutcheon (F) over Diverter.
7. Loosen Set Screw (L) on Diverter, slide Lower Mount (G) into Diverter and tighten set screw. Do Not Expose Tape!
8. Push Top Tee (B) over Inlet Fitting (C) until flush against fitting. Position Diverter so Shower Pipe (E) is plumb (vertical). Mark location of Lower Mount (G) with pencil.

9. Wall surface must be clean of any residue and completely dry. Remove covering of two-face tape and reposition Lower Mount (G) to mark so the optional mounting holes are horizontal. Apply pressure to mount for 30 seconds by pushing firmly against the Diverter. To ensure proper adhesion, allow one hour before using your ShowerSpa and keep area around the mount as dry as possible for the first 24 hours. Tape will be fully cured after 24 hours.

OPTIONAL—Secure Lower Mount (G) with permanent wall anchors. Mark hole locations in Lower Mount. Drill 1¼" deep holes using 6mm (1/4") masonry/tile drill bit. Insert Wall Anchors (P) and secure Lower Mount with Screws (O).

CAUTION — LIVE PLUMBING IN WALL

10. Position Shower Pipe (E) parallel to wall by adjusting Diverter on Lower Mount (G). Secure Diverter to Lower Mount with Set Screw (L).
11. Insert Rubber Washer (M) into both ends of Hose (J). Connect hex-head end to outlet on Diverter and tapered end to Hand Shower (I). Place Hand Shower (I) into Holder.
12. Insert Rubber Washer (M) in Shower Head (H) and tighten securely to Shower Arm (A).

Flow Restrictor Information

This unit contains flow restrictors limiting flow to 2.5GPM/9.5LPM (Model # 1053-CH & 1053-BN). If the flow rate is less than expected, or reduces over time, you may have an obstruction at the inlet restrictor.

To check for debris, remove shower unit from wall, exposing the Inlet Fitting (C) (attached to wall).

Using needle nose pliers, rotate C-clip until one end enters the cutout section of the fitting, then pull the C-clip out completely.

With needle nose pliers, gently depress the inner yellow ring of the restrictor to expose the white spindle. Hold the spindle with pliers and pull toward you to remove.

Remove the screen and turn cold water on—SLOWLY.

Run water for 15 seconds to remove debris from water line.

Check screen and restrictor for sediment. Use water and a soft nylon brush (if necessary) to remove sediment.

When finished, first replace the screen, then the restrictor and finally the C-clip.

Your Riviera Showerspa is fully functional with or without the restrictors. Depending on your local plumbing codes, the restrictors may or may not be necessary.

Usage

Diverter valve controls the shower head, handheld shower and body spray functions. Turn diverter knob right or left to the desired setting. The diverter will click into place at each function.

The shower arm height is adjustable by sliding the arm up or down while holding the shower pipe with your free hand. The arm also swings freely to the left or right by gently pressing on the arm or shower head.

Rotate face of hand shower to switch settings and rotate holder forward or back to adjust angle.

Rotate body jets $\frac{1}{4}$ turn left or right to select stimulating, soothing functions or turn jet on and off. Change the angle of spray by pushing the jet left, right, up or down.

Adjust hand shower height by depressing button on holder and sliding it up or down.

Always turn cold water on first to help prevent any accidental burning or scalding; especially for children and elderly.

Do not use any part of the Riviera Rain Shower system as a support device.

Care

To keep your ShowerSpa looking new, wipe down after each use with a soft cotton cloth.

Protect your ShowerSpa from hard water stains and mineral deposits by periodically using an auto spray wax.

Clean using mild liquid soap and a non-abrasive sponge or cloth. Rinse with clean water.

Do not use any kind of chemicals or abrasives.

If the flow rate of your ShowerSpa is less than expected, reduces over time or functions are not completely independent, the actuator can be removed to clean sediment. Please CALL TECH SUPPORT @ 1-888-785-7320 (8:30 am – 5:00 pm pacific time Monday – Friday) and we will be happy to assist you.

LIFETIME LIMITED WARRANTY

1. Defects Covered; Warranty Period. Pulse Shower Spas, Inc. ("Pulse") warrants to the original consumer purchaser who purchases this shower spa (the "Product") for use in his or her own home, that the Product will be free from defects in material and manufacturing workmanship for as long as the original consumer purchaser owns that same home. For all other purchasers (including, but not limited to purchasers for industrial, commercial and business use), the above warranty will apply for a period of 5 years from the original date of purchase.

2. Remedy. If the Product does not conform to the above warranty, Pulse, at its option, will repair or replace the Product, free of charge, or refund your purchase price. For warranty claims, please visit www.pulshowerspas.com/index.php/warranty. Pulse may require that you return the Product to Pulse, shipping prepaid, in which case Pulse will provide you with a return materials authorization number (RMA). Pulse may also require that you provide evidence of the date you purchased the Product. Pulse will ship a new or repaired Product to you, at the expense of Pulse, or refund your purchase price. Service labor performed by you or others in connection with the removal or replacement of the Product will not be reimbursed by Pulse.

3. Exclusions. Pulse shall not be responsible for failure of the Product, and the above warranties will not apply, if the Product fails as a result of improper installation, improper use, modifications or repairs by anyone other than Pulse, or accident or abuse (including damage during shipment).

4. Warranty on Repairs and Replacements. For consumer purchasers who purchased the Product for home use, repaired or replacement Products will continue to be covered under this warranty for as long as he or she owns that same home. For other purchasers, repaired or replacement Products will be covered for the balance of the original warranty period.

5. No Other Warranties; Limitation of Liability. OTHER THAN THE LIFETIME LIMITED WARRANTY STATED ABOVE, PULSE DISCLAIMS ALL OTHER WARRANTIES, EXPRESS OR IMPLIED, INCLUDING BUT NOT LIMITED TO WARRANTIES OF MERCHANTABILITY AND FITNESS FOR A PARTICULAR PURPOSE, TO THE EXTENT PERMITTED BY APPLICABLE LAW. THE REMEDIES STATED ABOVE ARE YOUR SOLE REMEDIES IN CONNECTION WITH THIS WARRANTY. IN NO EVENT WILL PULSE BE LIABLE TO YOU FOR ANY DAMAGES, WHETHER DIRECT, INDIRECT, INCIDENTAL, SPECIAL OR CONSEQUENTIAL, INCLUDING BUT NOT LIMITED TO LOST PROFITS OR BUSINESS INTERRUPTION, ARISING OUT OF OR RELATING TO THE PRODUCT OR ITS USE, WHETHER UNDER A CONTRACT, WARRANTY, TORT, OR ANY OTHER CAUSE OF ACTION, EVEN IF PULSE HAS BEEN ADVISED OF THE POSSIBILITY OF SUCH DAMAGES. NOTWITHSTANDING THE TERM OF ANY LIMITED OR IMPLIED WARRANTY, OR IN THE EVENT THAT ANY LIMITED WARRANTY FAILS OF ITS ESSENTIAL PURPOSE, IN NO EVENT WILL PULSE'S ENTIRE LIABILITY EXCEED THE PURCHASE PRICE OF THE PRODUCT. SOME STATES AND PROVINCES DO NOT ALLOW THE EXCLUSION OR LIMITATION OF INCIDENTAL OR CONSEQUENTIAL DAMAGES SO THE ABOVE LIMITATIONS OR EXCLUSIONS MAY NOT APPLY TO YOU. THIS LIMITED WARRANTY GIVES YOU SPECIFIC LEGAL RIGHTS, AND YOU MAY ALSO HAVE OTHER RIGHTS WHICH VARY FROM STATE TO STATE AND PROVINCE TO PROVINCE.

